

Lead2passExam

> Contact Us Login / Register Search...

Lead2passExam

HOME

ALL VENDORS

★ GUARANTEE

? FAQ

TESTIMONIALS

CART (1)

Pass Your Next Certification Exam Fast!

Everything you need to prepare, learn & pass your certification exam easily.
365 days free updates. First attempt guaranteed success.



Select a vendor...

Select an test...

Your email address

Free Download Demo

Top Certifications

- ▶ IBM Cognos ▶ Linux Essentials ▶ Magento Certified Developer Plus ▶ BCS Certification
- ▶ Citrix NetScaler ▶ Nokia Networks Certification ▶ Solutions Expert
- ▶ VCAP6-DCV Deployment ▶ Oracle Sales Cloud 2016 Certified ▶ Oracle Service Cloud
- ▶ CCP-N ▶ IBM Certified Mobile System Administrator ▶ Windows 7 ▶ APC Certification
- ▶ HPE Sales Certified

Top Vendors

- ▶ Logical Operations ▶ TIA ▶ Pegasystems ▶ IISFA ▶ Mile2 ▶ 3COM ▶ Altiris ▶ IIA
- ▶ AccessData ▶ Avaya ▶ BACB ▶ Nokia ▶ RAPS ▶ McAfee ▶ Professional Tests
- ▶ Mile2-Security ▶ CIPS ▶ Legato ▶ ASQ ▶ QlikView ▶ NSCA ▶ PSAT ▶ HRCI
- ▶ WorldatWork ▶ Guidance Software

What Client's Say

“ Passed the exam yesterday, but 10 questions new not came from this dump. every other questions are same. Totally valid. ”



Roy
★★★★★

“ This is still valid. Passed today with 80%. looked like 3-4 new questions. Many thanks! Good braindumps ”



Vic
★★★★★

<http://www.lead2passexam.com/>

Available Exam Cram and Valid Dumps - Lead2Pass Exam

Exam : 642-356

Title : Cisco Storage Networking Solutions Support Specialist(CSSSS)

Vendors : Cisco

Version : DEMO

1. Which command would you use to determine if device aliases in VSAN 5 are configured for fabric-wide distribution?

- A. show zoneset name alias vsan 5
- B. show cfs application name device-alias
- C. show fcalias distribution vsan 5
- D. show vsan 5 device-alias status

Answer: B

2. The MDS 9000 family switches use what three technologies to protect against unauthorized management access? (Choose three.)

- A. SNMPv3
- B. SSH
- C. RBAC
- D. RMON
- E. SES
- F. WEBM

Answer: ABC

3. What is a benefit of enhanced zoning?

- A. fabric locked during configuration changes
- B. larger zoning database size
- C. database rollback in case of failure
- D. zones allowed to span VSANs

Answer: A

4. Which two of these environments suggest the use of FCIP Write Acceleration? (Choose two.)

- A. remote tape backup
- B. PortChannel links between sites
- C. applications that support multiple outstanding I/Os

D. fast network with minimal delays

E. DWDM links

Answer: BC

5. Which three of the following are possible reasons why a line card module does not come online?
(Choose three.)

A. Port indexes have been taken offline.

B. Available port indexes are noncontiguous.

C. Not enough power is available in the chassis.

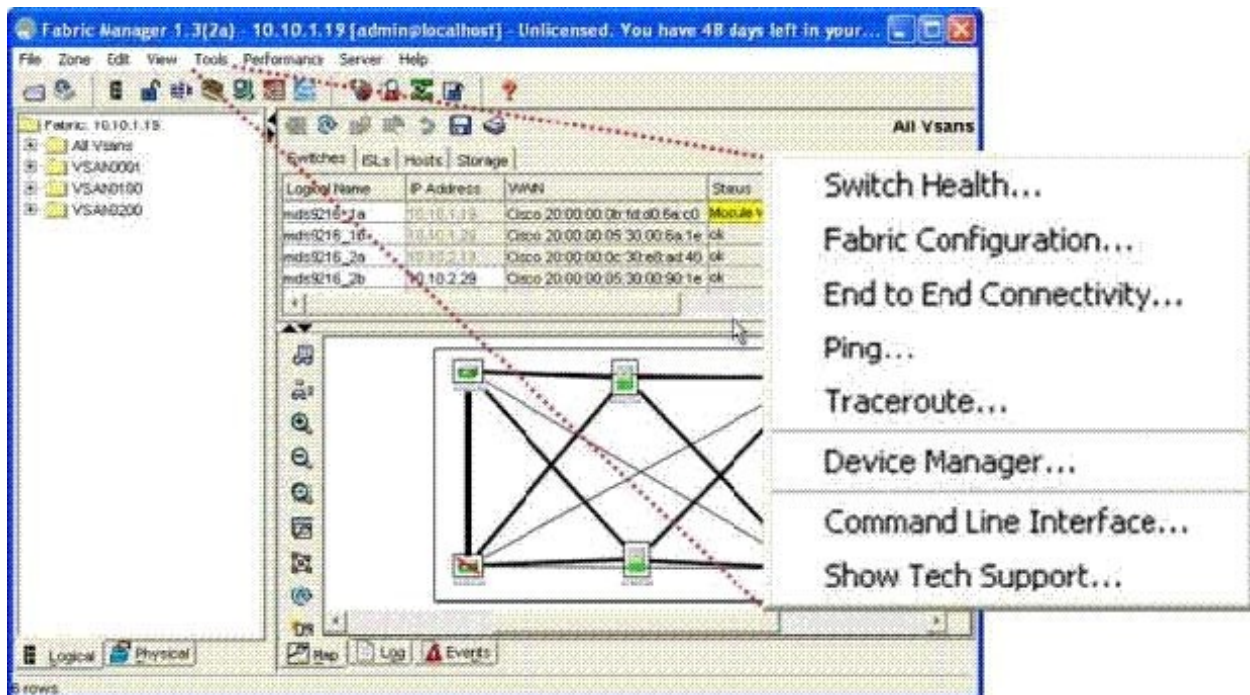
D. An invalid interoperability mode has been configured.

E. Unsupported SFPs have been installed.

F. Not enough port indexes are available.

Answer: BCF

6. Refer to the exhibit. Which two options from the Tools menu would you select to verify connectivity and latency to a Fibre Channel end device? (Choose two.)



A. Switch Health

B. Fabric Configuration

C. End to End Connectivity

D. Ping

E. Device Manager

Answer: CD

7. During initial switch configuration, the administrator elects to enable full zoneset distribution. What is the impact of this choice during zoneset activation?

A. only the active zoneset is distributed to all switches in the fabric

B. both the full zone database and active zoneset are distributed to all switches in the fabric

C. both FCID and WWN information are distributed to all switches in the fabric

D. only the full zone database is distributed to all switches in the fabric

Answer: B

8. You are asked to review the running configuration of a switch that a junior administrator has prepared to be placed in a heterogeneous SAN environment. This environment includes three different brands of Fibre Channel switches. In this particular environment, only VSAN 1 is being used.

Which of these attributes suggests that the switch has been incorrectly configured?

A. A static domain ID has been set to 0x21.

B. The src-dst-ox load balancing has been selected.

C. Interop mode 1 has been selected.

D. FCC has been enabled.

Answer: A

9. What two commands must be executed on an MDS 9000 family switch in order to change a dynamically assigned Domain ID 5 to a static Domain ID 10 for VSAN 10? Choose two.

A. switch(config-if)# shut fcdomain 5

B. switch(config-if)# no shut fcdomain 10

C. switch(config)# fcdomain domain 10

D. switch(config)# fcdomain domain 10 static vsan 10

E. switch(config)# fcdomain restart vsan 10

F. switch(config)# fcdomain restart disruptive vsan 10

Answer: DF

10. When configuring FCIP, packet fragmentation should be avoided in order to achieve optimal throughput. Fragmentation can be avoided by knowing which of the following?

A. MTU of the source IP interface

B. largest MTU in the path

C. smallest MTU in the path

D. MTU of the destination IP interface

Answer: C